



**PREMIUM PARTNER IN
PACKAGING & HANDLING**

PRODUCT / INFO CATALOGUE

METAL PACKAGING & HANDLING PRODUCTS

INTERNATIONAL SUPPLIER OF PREMIUM
PACKAGING & HANDLING SOLUTIONS

2019 / 20

ABOUT PALLETBIZ METAL

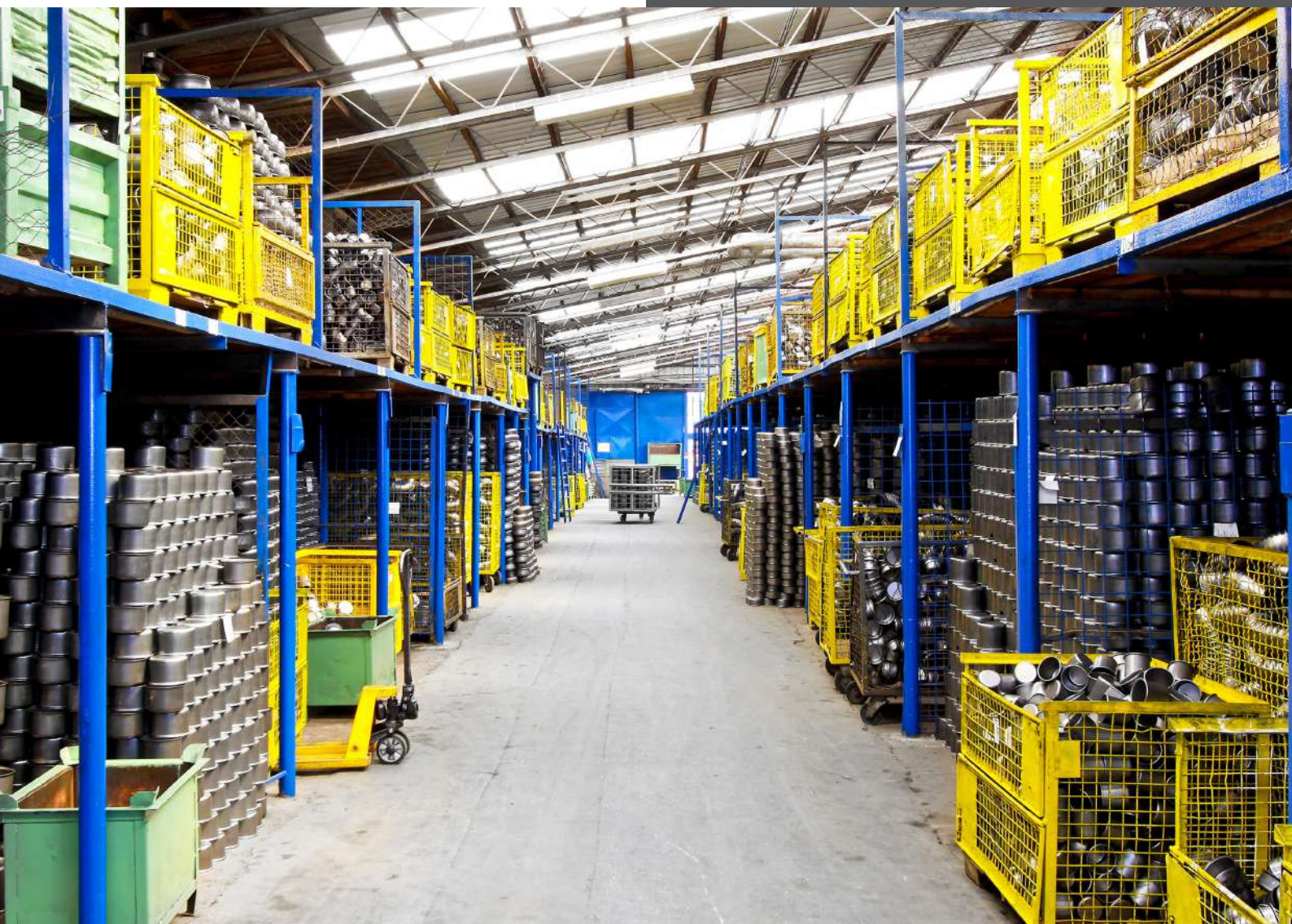
Metal Packaging & Handling products are being used in all industry corners to provide a stable and often long-termed solution for transport and warehousing needs.

In PalletBiz we are often met with inquiries for Metal Packaging, that is either standard or very specialized or even where wood and metal is combined to form the optimal solution to cater for our clients needs.

In this brochure, you will find a selection of the most common types of Metal Packaging products we offer. We hope you will find what you are searching for and if not - do not hesitate to contact one of our representatives to provide you with your preferred or our recommended solution.



*“IN PALLETBIZ WE HAVE A GREAT
COMBINED EXPERIENCE WORKING
WITH BOTH WOOD AND METAL
- OFTEN A GREAT COMBINATION
CONSIDERING COST”*



UIC GITTERBOXES

The most common transportation and warehousing steel box.
Certified by EPAL & UIC according to DIN 15/155 C Norm 435-3. Each box has a unique Y-Pylon number.

Technical Specifications:

Dimensions inside:

1200 x 800 x 800 mm

Wire-mesh:

3,8 - 4,2 mm

Load capacity:

1500 kg / 0,75 m³

Stacking:

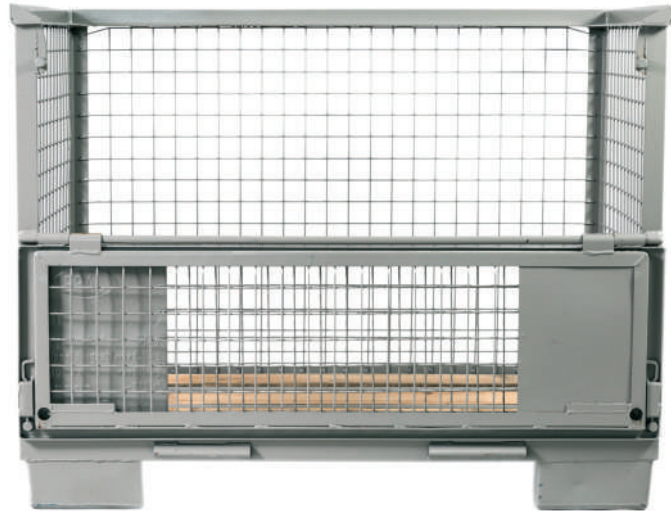
4x stackable

Surface:

RAL 7030 grey

Loading quantity per truck:

96 / 108 pcs. (MEGA / Trailer)



- **Standardized product - Exchangeable globally**
- **Superimposed load capacity of up to 6.000 kg. when stacking**

FOLDED WIRE MESH BOXES

Dimensions based on UIC Gitterboxes with opportunity to folding, made of wire mesh.
Loading properties same like in UIC boxes.

Technical Specifications:

Dimensions inside:

1200 x 800 x 800 mm

Load capacity:

900 kg and 1500 kg

Stacking:

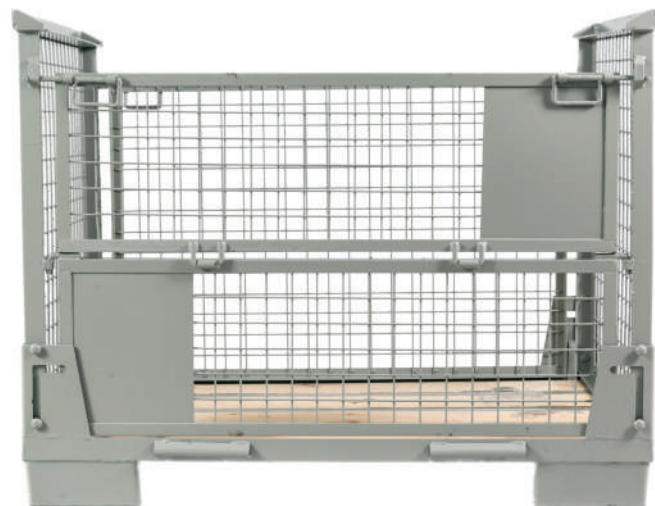
3x stackable

Surface:

All RAL colors or zinc surfaced

Loading quantity per truck:

To 200 pcs.



- **Another cost alternative to UIC Gitterboxes**
- **Collapsible and easy handling**



HALF BOXES

Designed and produced according to your specification. Half boxes are designed for smaller and lighter loadings with or without clap. Produced with wire mesh or walls from steel, with load capacity to 1500 kg.

Technical Specifications:

Dimensions:

according to your request

Load capacity:

900 kg and 1500 kg

Stacking:

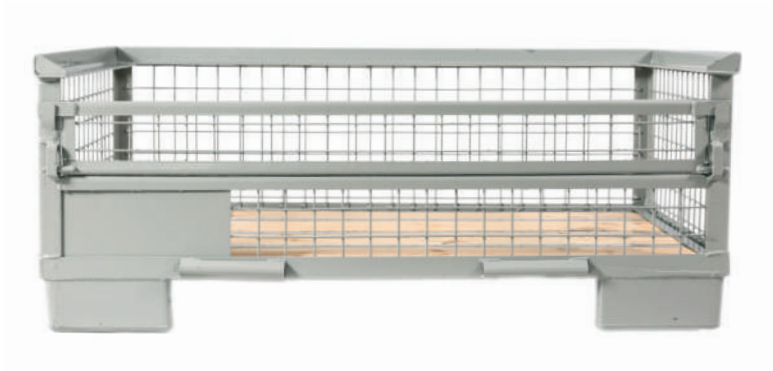
3x stackable

Surface:

All RAL colors or zinc surfaced

Loading quantity per truck:

192 / 216 pcs. (MEGA / Trailer)



- **Great storing & handling solution for components and spare parts**
- **Flexible and popular solution for industrial warehouse stacking**

STEEL COLLARS

Alternative to the UIC Boxes and mountable on all 1200 x 800 sized pallets. Same functionality as Steel boxes and takes less storage space. Possibility to divide with one or two claps, and can be designed according to your specifications, with a height up to 2000 mm.

Technical Specifications:

Dimensions:

1200 x 800 x 800 mm

Wire-mesh:

50 x 50/100 x 3,8-4,2 mm

Load capacity:

1000 - 1500 kg

Stacking:

3x stackable

Surface:

All RAL colors or zinc surfaced

Loading quantity per truck:

Approx. 700 pcs.



- **Flexible and collapsible, ensuring easy handling & storing**
- **Fantastic cost-conscious solution**

MOBILRACK/MANURACK PALLETS

With mobilrack pallets you can store your pallets with the goods and this way create a flexible and safe racking system. Mobilrack pallets are produced according to the TÜV standard. 2 types available – Single and Double.

Technical Specifications:

Dimensions inside:

1005 x 1370 mm (single)
1005 x 1870 mm (double)

Load capacity:

1500 kg / Max height 870 mm

Stacking:

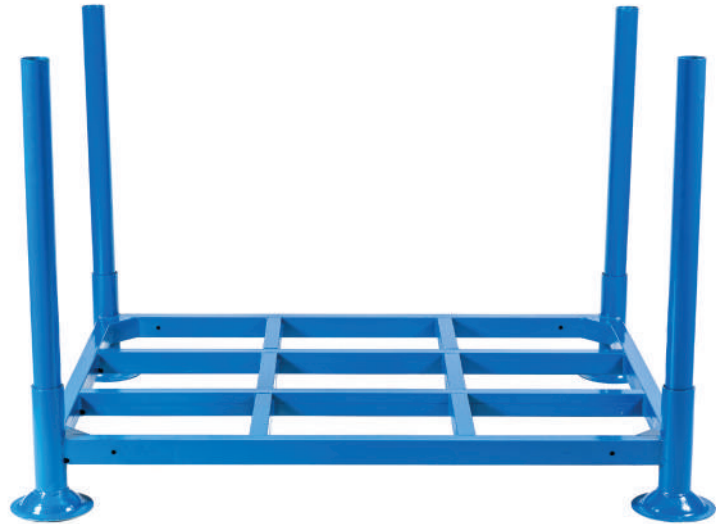
Up to 5x stackable

Surface:

All RAL colors or zinc surfaced

Loading quantity per truck:

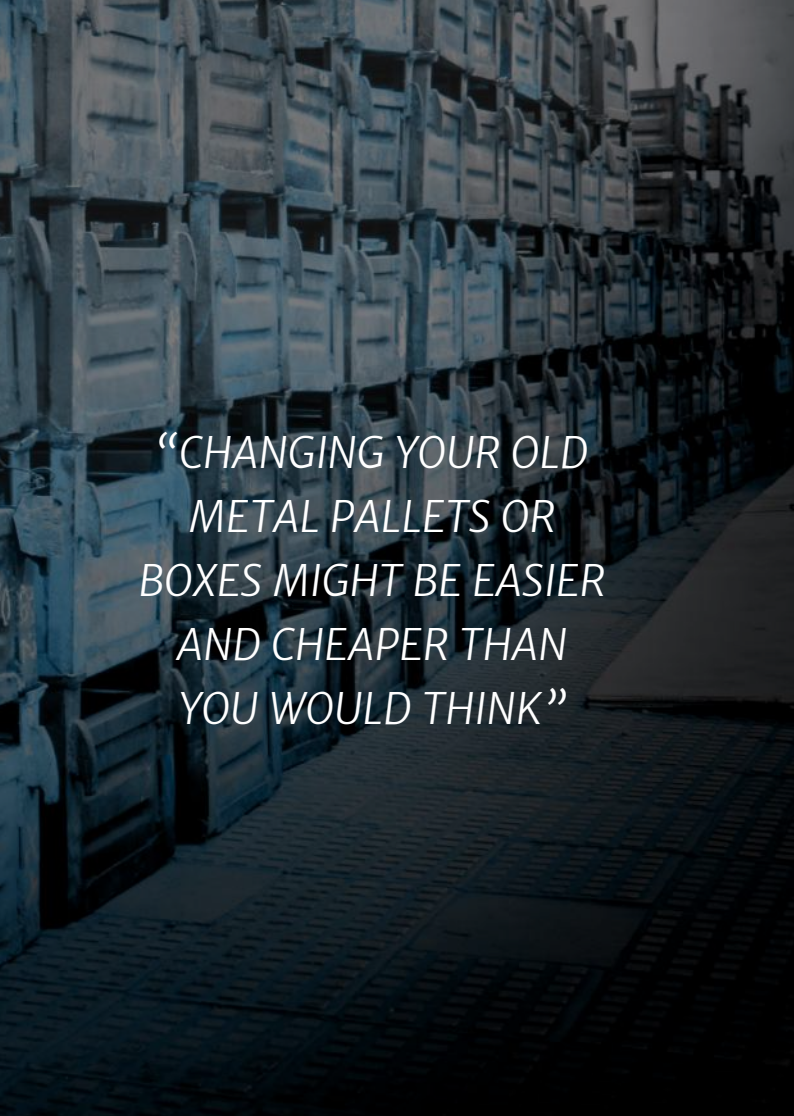
300/400 pcs. (MEGA / Trailer)



- **Compatible with Euro pallet dimensions**
- **Great solution for optimizing warehouse storage space**

“GITTERBOXES ARE ONE OF THE MOST WELL-KNOWN AND RECOGNIZED HANDLING PRODUCTS IN THE PROFESSIONAL INDUSTRY“





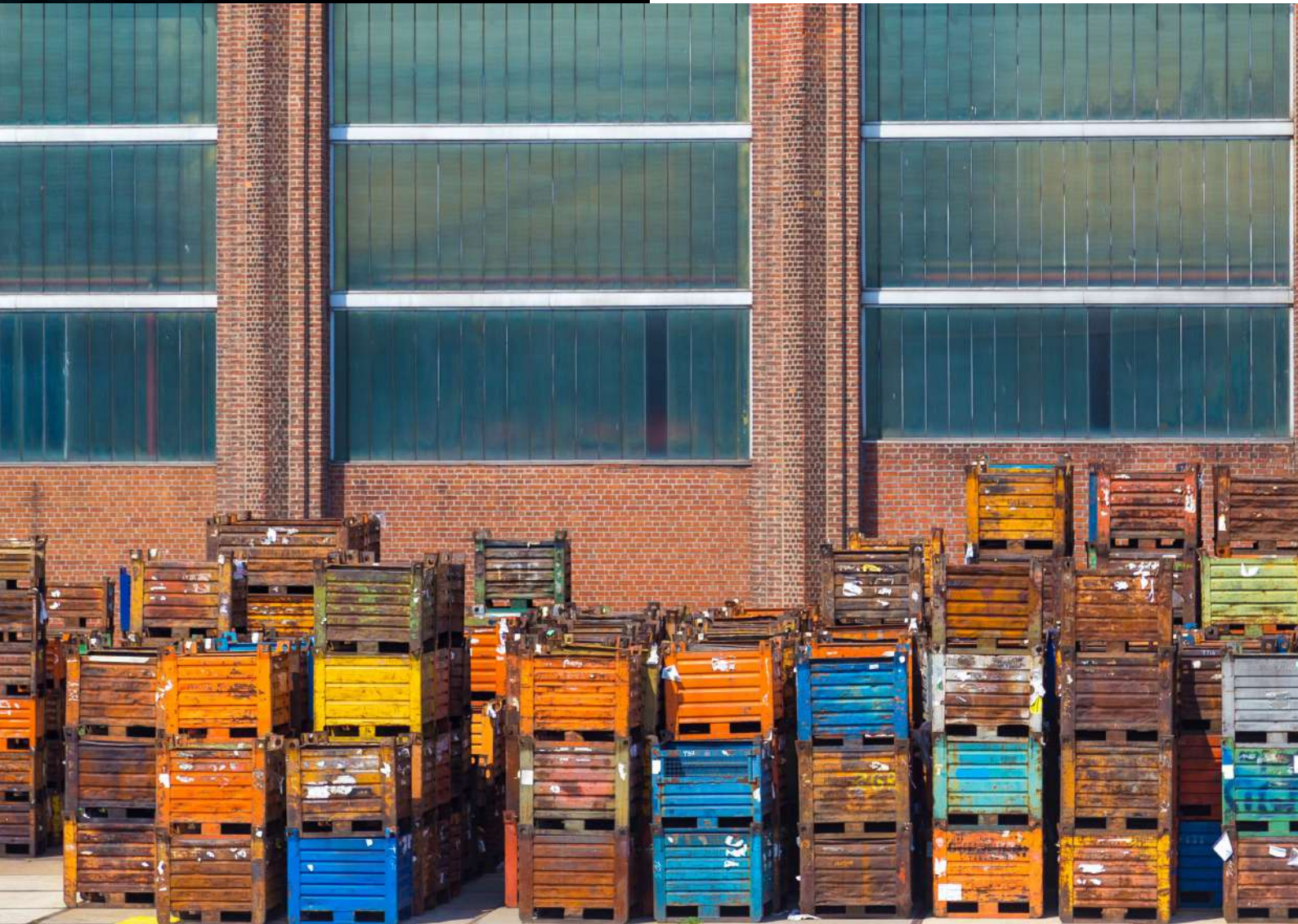
*“CHANGING YOUR OLD
METAL PALLETS OR
BOXES MIGHT BE EASIER
AND CHEAPER THAN
YOU WOULD THINK”*

CHANGE YOUR OLD STEEL PACKAGING

Using Metal Packaging & Handling materials can be a long-termed investment in your storage facility, for your intercompany logistics or perhaps for your clients. Like all products, metal will sooner or later deteriorate and become of poor if not to times – dangerous condition.

However, changing your old metal pallets or boxes might be easier and cheaper than you would think.

Reach out to your local representative and let us find the right solution for your company: quality and price considered. PalletBiz Metal is your solid partner!



SOLID BOXES WITH CLAP

Designed and produced according to your specification. Solid Boxes are universal and durable with wire mesh or walls from steel and load capacity up to 6000 kg.

Technical Specifications:

Dimensions:

400 mm to 1900 mm

Load capacity:

900 till 6000 kg

Surface:

All RAL colors or zinc surfaced

Loading quantity per truck

25 to 255 boxes



- **Good flexibility in size and construction**
- **Can resist heavy loadings**

SOLID BOXES WITHOUT CLAP

Compared to the solid boxes with clap, these boxes have four solid walls. All boxes are made according to your company specifications.

Technical Specifications:

Dimensions:

according to your request

Load capacity:

900 to 6000 kg

Stacking:

3x stackable

Surface:

All RAL colors or zinc surfaced

Loading quantity per truck

25 to 255 boxes



- **Keeping your products safe and solid**
- **Load capacity of up to 6.000 kg.**



- WE LOOK FORWARD TO HEARING FROM YOU

YOUR LOCAL PARTNER

VISIT OUR WEBSITE AT WWW.PALLETBIZ.COM